

Green Pin®

Polar Shackles

in accordance with EN 13889

- WLL guaranteed till -40 °C
- DNV Type Approved Product
- Grade 8
- Also meets performance requirements of US Federal Specification RR-C-271
- WLL range from 2 ton up to 85 ton
- Can be recognized by, not only “Green Pin”, but also Green shackle “Eyes”

Improved model!



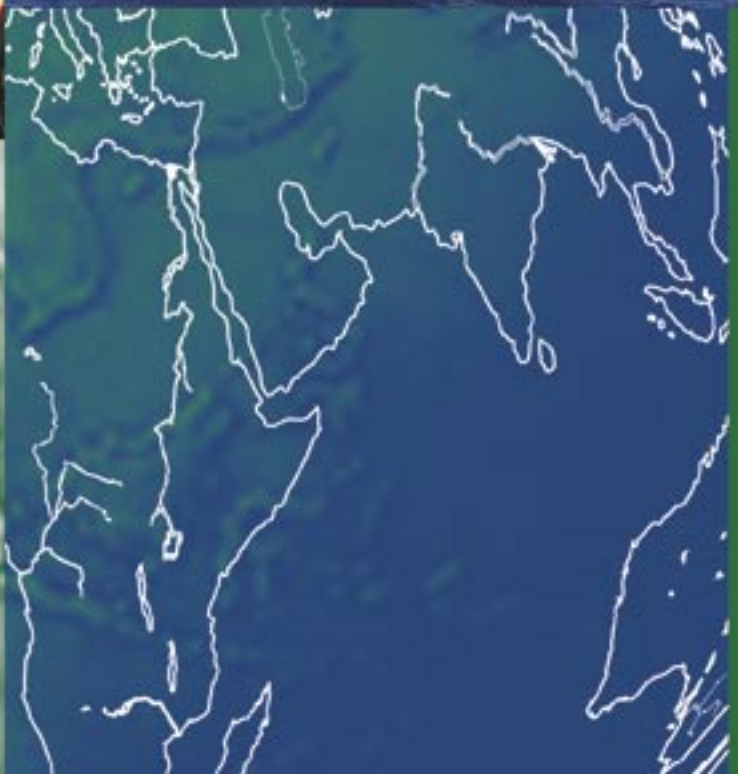
DNV

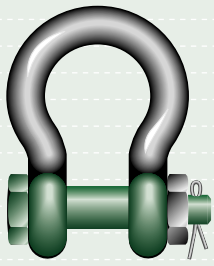
TYPE APPROVED PRODUCT
CERTIFICATION NOTE 2.7-1
CERTIFICATE NO. S-4208

VAN BEEST

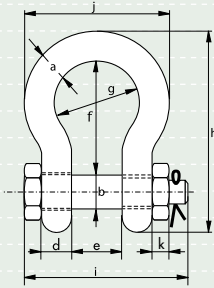


your reliable partner





G-5163



Green Pin® Polar Shackles

bow shackles with safety bolt, for use under extreme climatic conditions

- **Material** : bow and pin alloy steel, Grade 8, quenched and tempered
- **Safety Factor** : MBL equals 6 x WLL
- **Standard** : EN 13889 and
meets performance requirements of US Fed. Spec. RR-C-271 Type IVA Class 3, Grade A
- **Finish** : hot dipped galvanized
- **Temperature Range** : -40 °C up to +200 °C
- **Certificates** : at no extra charges this product can be supplied with a works certificate, certificate of basic raw material, manufacturer test certificate and/or EC Declaration of Conformity

working load limit	diameter bow	diameter pin	diameter eye	width eye	width inside	length inside	width bow	length bow	length bolt	width nut	thickness nut	weight each
tons	a mm	b mm	c mm	d mm	e mm	f mm	g mm	h mm	i mm	j mm	k mm	kg
2	13.5	16	34	13.5	22	51	32	91	83	63	13	0.42
3.25	16	19	40	16	27	64	43	114	99	79	17	0.74
4.75	19	22	47	19	31	76	51	136	115	94	20	1.18
6.5	22	25	53	22	36	83	58	157	131	107	23	1.77
8.5	25	28	60	25	43	95	68	176	151	124	25	2.58
9.5	28	32	67	28	47	108	75	197	167	137	28	3.66
12	32	35	74	32	51	115	83	218	179	154	31	4.91
13.5	35	38	80	35	57	133	92	240	198	170	34	6.54
17	38	42	89	38	60	146	99	262	203	183	19	8.19
25	45	50	104	45	74	178	126	314	244	226	24	14.22
35	50	57	119	50	83	197	138	358	270	250	27	19.85
42.5	57	65	134	57	95	222	160	414	302	287	30	28.33
55	65	70	145	65	105	260	180	463	330	329	33	39.59
85	75	83	163	75	127	329	190	556	376	355	40	62

In inch

working load limit	diameter bow	diameter pin	diameter eye	width eye	width inside	length inside	width bow	length bow	length bolt	width nut	thickness nut	weight each
tons	a inch	b inch	c inch	d inch	e inch	f inch	g inch	h inch	i inch	j inch	k inch	lbs
2	1/2	5/8	1 11/32	17/32	7/8	2	1 9/32	3 19/32	3 9/32	2 1/2	17/32	0.92
3.25	5/8	3/4	1 19/32	5/8	1 3/32	2 17/32	1 23/32	4 1/2	3 29/32	3 1/8	11/16	1.62
4.75	3/4	7/8	1 7/8	3/4	1 1/4	3	2	5 11/32	4 17/32	3 23/32	25/32	2.59
6.5	7/8	1	2 3/32	7/8	1 7/16	3 9/32	2 9/32	6 5/32	5 5/32	4 3/16	29/32	3.9
8.5	1	1 1/8	2 11/32	1	1 23/32	3 3/4	2 11/16	6 29/32	5 15/16	4 7/8	1	5.69
9.5	1 1/8	1 1/4	2 5/8	1 1/8	1 7/8	4 1/4	2 15/16	7 3/4	6 19/32	5 3/8	1 1/8	8.06
12	1 1/4	1 3/8	2 29/32	1 9/32	2	4 17/32	3 9/32	8 9/16	7 1/32	6 3/32	1 1/4	10.81
13.5	1 3/8	1 1/2	3 5/32	1 3/8	2 1/4	5 1/4	3 5/8	9 7/16	7 25/32	6 23/32	1 11/32	14.42
17	1 1/2	1 5/8	3 1/2	1 17/32	2 11/32	5 3/4	3 29/32	10 5/16	8	7 3/16	3/4	18.06
25	1 3/4	2	4 1/8	1 25/32	2 29/32	7	4 15/16	12 11/32	9 19/32	8 29/32	15/16	31.34
35	2	2 1/4	4 11/16	2 31/32	3 9/32	7 3/4	5 7/16	14 3/32	10 5/8	9 13/16	1 3/32	43.77
42.5	2 1/4	2 9/16	5 9/32	2 1/4	3 3/4	8 3/4	6 9/32	16 5/16	11 7/8	11 5/16	1 5/16	62.46
55	2 1/2	2 3/4	5 3/4	2 9/16	4 1/8	10 1/4	7 9/32	18 1/4	13	12 15/16	1 5/16	87.27
85	3	3 1/4	6 7/16	3 15/16	5	12 15/16	7 1/2	21 29/32	14 25/32	14	1 19/32	136.69

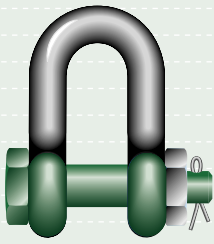


DNV

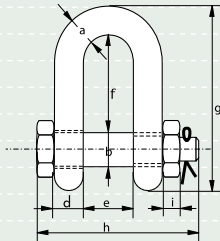
TYPE APPROVED PRODUCT
CERTIFICATION NOTE 2.7-1
CERTIFICATE NO. 5-4298

Green Pin® Polar Shackles

dee shackles with safety bolt, for use under extreme climatic conditions



G-5153



- **Material** : bow and pin alloy steel, Grade 8, quenched and tempered
- **Safety Factor** : MBL equals 6 x WLL
- **Standard** : EN 13889 and
meets performance requirements of US Fed. Spec. RR-C-271 Type IVB Class 3, Grade A
- **Finish** : hot dipped galvanized
- **Temperature Range** : -40 °C up to +200 °C
- **Certificates** : at no extra charges this product can be supplied with a works certificate, certificate of basic raw material, manufacturer test certificate and/or EC Declaration of Conformity

working load limit	diameter bow	diameter pin	diameter eye	width eye	width inside	length inside	length bolt	length nut	thickness nut	weight each
tons	a mm	b mm	c mm	d mm	e mm	f mm	g mm	h mm	i mm	kg
2	13.5	16	34	13.5	22	43	85	83	13	0.39
3.25	16	19	40	16	27	51	105	99	17	0.67
4.75	19	22	47	19	31	59	125	115	20	1.08
6.5	22	25	53	22	36	73	144	131	23	1.66
8.5	25	28	60	25	43	85	161	151	25	2.46
9.5	28	32	67	28	47	90	179	167	28	3.4
12	32	35	74	32	51	94	199	179	31	4.51
13.5	35	38	80	35	57	115	220	198	34	6.1
17	38	42	89	38	60	127	239	203	19	7.63
25	45	50	104	45	74	149	283	244	24	13.25
35	50	57	119	50	83	171	333	270	27	18.53
42.5	57	65	134	57	95	190	360	302	30	25.94
55	65	70	145	65	105	203	399	330	33	35.33
85	75	83	163	75	127	229	455	376	40	52.97

In inch

working load limit	diameter bow	diameter pin	diameter eye	width eye	width inside	length inside	length bolt	length nut	thickness nut	weight each
tons	a inch	b inch	c inch	d inch	e inch	f inch	g inch	h inch	i inch	lbs
2	1/2	5/8	1 11/32	17/32	7/8	1 23/32	3 11/32	3 9/32	17/32	0.85
3.25	5/8	3/4	1 19/32	5/8	1 3/32	2	4 1/8	3 29/32	11/16	1.48
4.75	3/4	7/8	1 7/8	3/4	1 1/4	2 5/16	4 29/32	4 17/32	25/32	2.36
6.5	7/8	1	2 3/32	7/8	1 7/16	2 7/8	5 11/16	5 5/32	29/32	3.66
8.5	1	1 1/8	2 11/32	1	1 23/32	3 11/32	6 5/16	5 15/16	1	5.42
9.5	1 1/8	1 1/4	2 5/8	1 1/8	1 7/8	3 9/16	7 1/32	6 9/16	1 1/8	7.5
12	1 1/4	1 3/8	2 29/32	1 9/32	2	3 23/32	7 13/16	7 1/32	1 1/4	9.95
13.5	1 3/8	1 1/2	3 5/32	1 3/8	2 1/4	4 17/32	8 11/16	7 25/32	1 11/32	13.45
17	1 1/2	1 5/8	3 1/2	1 17/32	2 11/32	5	9 3/8	8	3/4	16.82
25	1 3/4	2	4 1/8	1 25/32	2 29/32	5 7/8	11 5/32	9 19/32	15/16	29.21
35	2	2 1/4	4 11/16	1 31/32	3 9/32	6 3/4	13 1/8	10 5/8	1 3/32	40.86
42.5	2 1/4	2 9/16	5 9/32	2 1/4	3 3/4	7 1/2	14 5/32	11 29/32	1 3/16	57.19
55	2 1/2	2 3/4	5 3/4	2 9/16	4 1/8	8	15 23/32	13	1 5/16	77.89
85	3	3 1/4	6 7/16	2 15/16	5	9	17 29/32	14 25/32	1 19/32	116.77



DNV

TYPE APPROVED PRODUCT
CERTIFICATION NOTE 2.7-1
CERTIFICATE NO. 5-4298

Green Pin® your reliable partner...

To ensure the high and steady quality of our **Green Pin®** products, Van Beest is certified according to the latest ISO norm, 9001:2000. This is implemented in all aspects of our organization, from the purchase of the raw material to the education of our staff and the quality inspections during the production process. The combination of the right material and a balanced heat treatment, results in a high quality product with optimal strength and ductility.



Make sure you are using the original **Green Pin®** product by checking the marking on the body and pin of the shackle. Besides the steel grade and CE conformity sign, you will find our manufacturer code: Bs for **Green Pin®** Polar shackles. Furthermore our products show a traceability code that enables us to trace any shackle back to the raw material and all the stages of the production process to its final testing. Please make sure you use genuine **Green Pin®** products; after all, you would not want to find yourself risking lives and loads by using a copy!

Recently new developments with our **Green Pin®** Polar shackles have resulted in improved performance. In order to verify material specifications the shackles have been load tested at extreme low temperatures. As a result of this testing we can now guarantee performance till -40 °C.



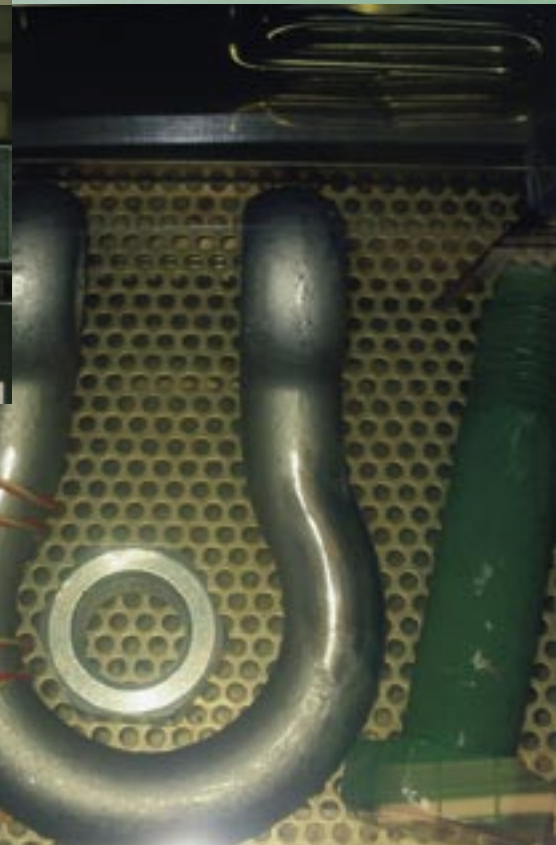
At the same time the **Green Pin®** Polar Shackles are DNV type approved to certification note 2.7-1, lifting sets for off shore containers.



TYPE APPROVED PRODUCT
CERTIFICATION NOTE 2.7-1
CERTIFICATE NO. S-4208



In order to distinguish the **Green Pin®** Polar shackles from regular **Green Pin®** shackles the new model can be recognized by the Green painted shackle "eyes".



www.vanbeest.nl

Your dealer: